

# M3 Compression System

## Remote compression latch

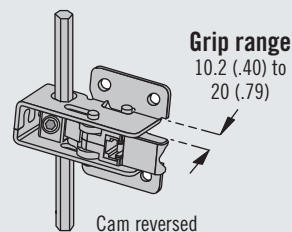
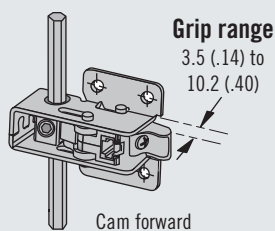
- Consistent compression driven by rotational rod
- Adjustable grip
- Meets NEMA 4 / IP66 and EMI standards
- Can be driven by hand, tool or key-locking actuators

### Material and Finish

Zinc alloy and steel, zinc plated

### Performance Details

Max. static load:  
890 N (200 lbf) per latch  
Average ultimate load:  
1335 N (300 lbf)



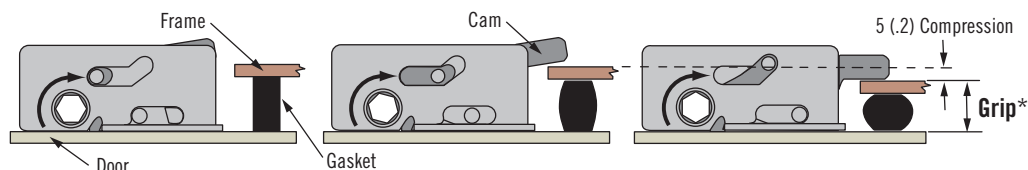
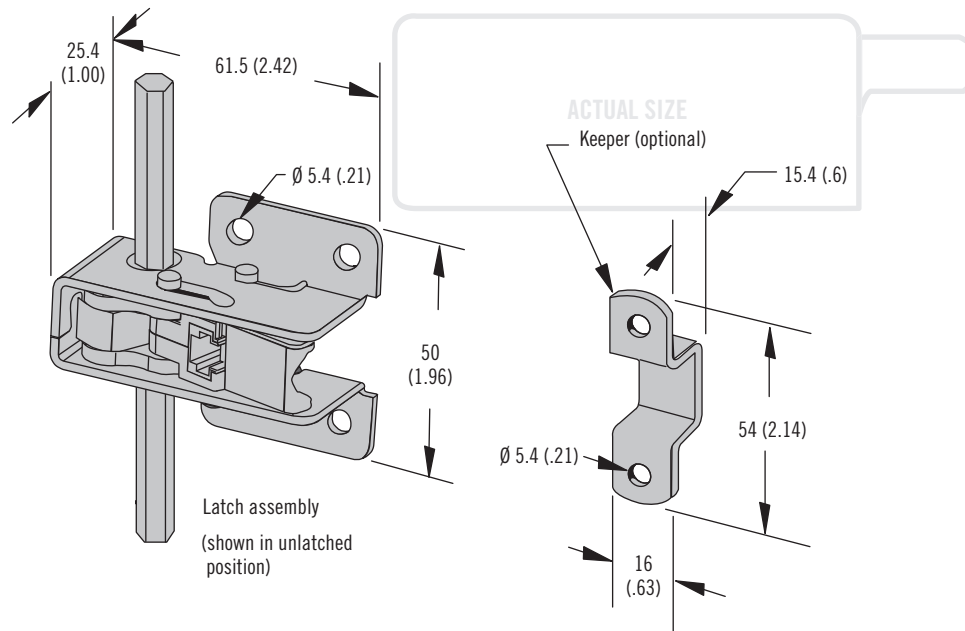
### Notes

Do not exceed 20 (.79) grip range with cam reversed

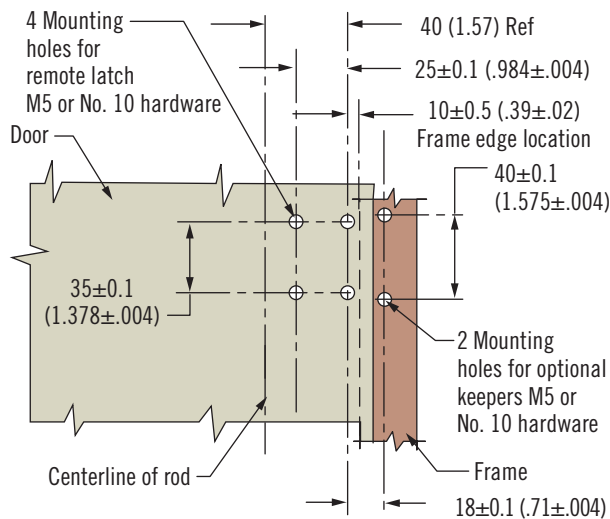
### Part Number

The complete system consists of:  
Remote compression latch and/or optional keeper (see page 210)  
Actuator (see pages 211-214)  
Rods (see page 215)

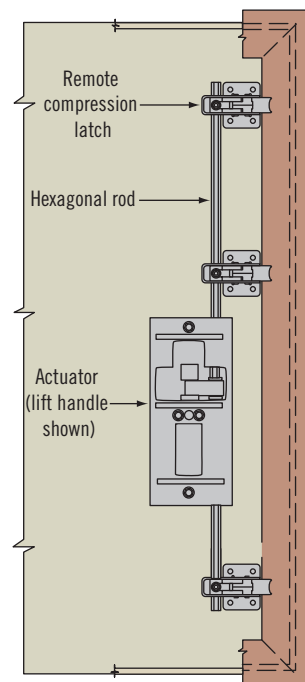
Order each component separately



\* Measure your Grip from the latch mounting surface to the inside frame surface, with gasket compressed



### Inside view



Part Number	
Remote compression latch	M3-50
Keeper (optional) use for grip ranges 15 - 30 (.59 - 1.18)	M3-51

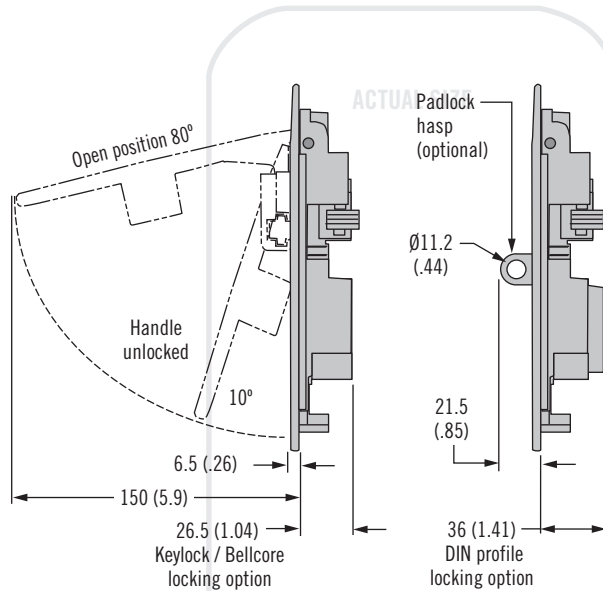
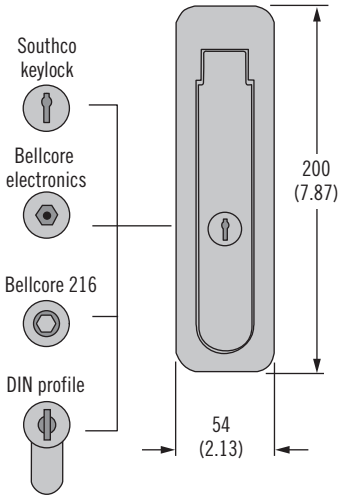
# M3 Compression System

## Actuators · Lift handle



### Lift Handle

Locking options



- Suitable for left and right side latching
- Meets NEMA 4/ IP66 and EMI standards
- Ejecting handle

### Material and Finish

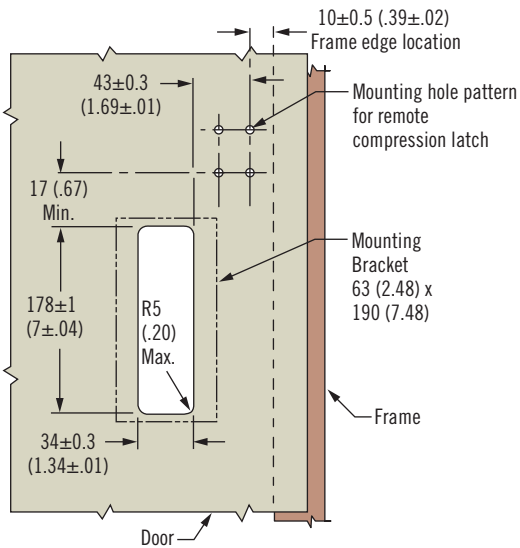
Zinc alloy black powder coated and steel, zinc plated

### Sealing Notes

NEMA 4 / IP66 achieved using gasket supplied

### DIN Profile Key Part

M3-0-36406



### Part Number Selection

- P** Padlock option  
**0** Non padlock  
**1** Padlockable
- D** Door thickness range  
**10** 1.5 - 3 (.06 - .12)  
**11** 3 - 4.5 (.12 - .18)  
**25** 24 - 25.5 (.94 - 1.0)

**M3 - 40 - L P - D**

- L** Lock style  
**10** Key-locking keyed alike CH751 (two keys supplied)  
**11** DIN profile supplied keyed alike 347876 (three keys supplied)  
**12** DIN profile, lock not supplied  
**13** Push button  
**16** Bellcore 216  
**17** Bellcore electronics

Actuator only

The complete system consists of:  
 Remote compression latch and/or optional keeper (see page 210)  
 Actuator (see page 211-214)  
 Rods (see page 215)

Order each component separately



# M3 Compression System

## Actuators · Push-button handle

- Suitable for left and right side latching

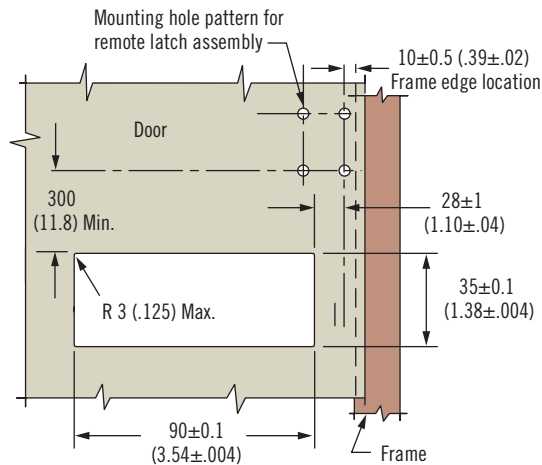
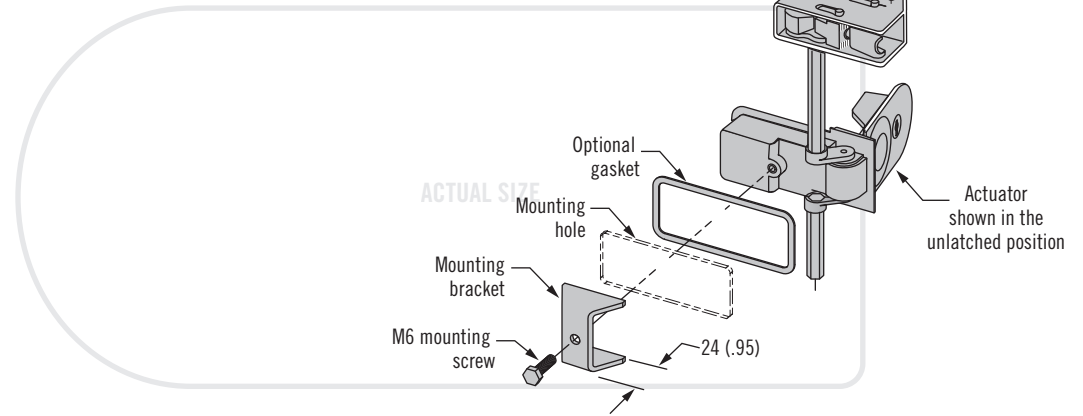
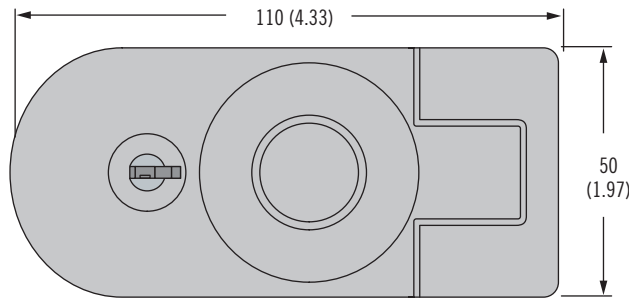
### Material and Finish

Zinc alloy, black powder coated and steel, zinc plated

### Sealing Notes

NEMA 4 / IP66 achieved using optional gaskets (ordered separately)

### Push-Button Handle



### Part Number

Actuator and sealing gasket only see table

The complete system consists of: Remote compression latch and/or optional keeper (see page 210) Actuator (see pages 211-214) Rods (see page 215)

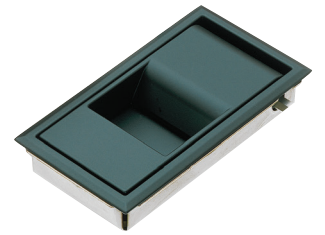
Order each component separately

Actuator	Door Thickness Range	Part Number
Push-button handle	0 - 5 (0 - .20)	M3-90
	5 - 10 (.20 - .39)	M3-92
Push-button handle with key-lock	0 - 5 (0 - .20)	M3-91
	5 - 10 (.20 - .39)	M3-93

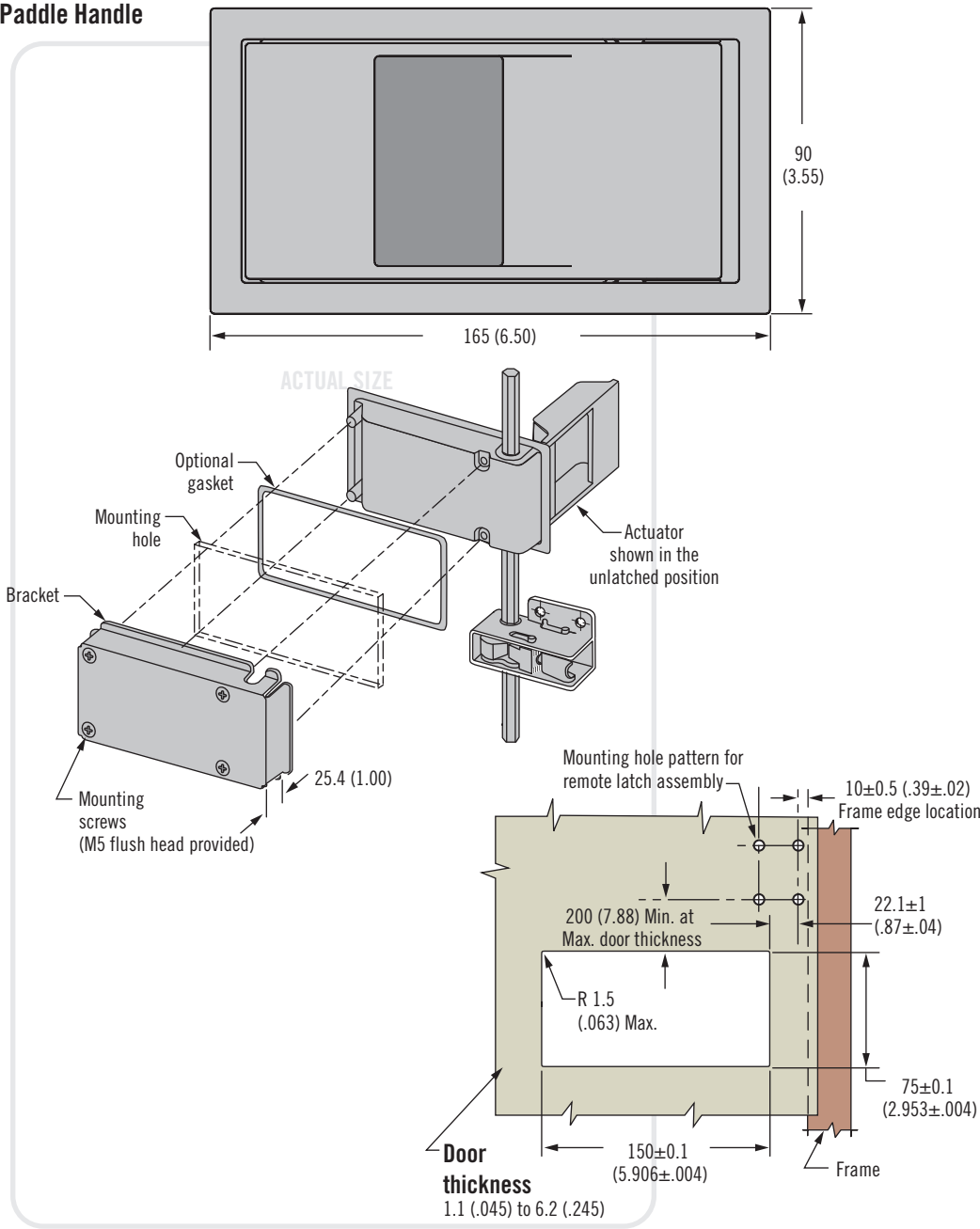
Sealing Gasket Part Number
C5-82

# M3 Compression System

## Actuators · Paddle handle



### Paddle Handle



- Suitable for left and right side latching

### Material and Finish

Zinc alloy, black powder coated and steel, zinc plated

### Sealing Notes

NEMA 4 / IP66 achieved using gasket supplied

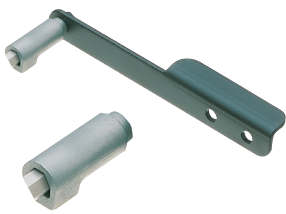


### Part Number

Actuator and gaskets only see table  
 The complete system consists of:  
 Remote compression latch and/or optional keeper (see page 210)  
 Actuator (see pages 211-214)  
 Rods (see page 215)  
 Order each component separately

Actuator	Part Number
Paddle (includes bracket and screws)	M3-10
Paddle with key-lock (includes bracket and screws)	M3-17

Gasket Type	Part Number
Environmental	M3-12
EMC	M3-13



# M3 Compression System

Actuators · Door edge lever · Concealed

- Simple actuator for top or bottom of door

### Material and Finish

Door edge lever: Zinc alloy, black powder coated and steel, zinc plated  
 Adaptor: Zinc alloy, chemical protective film

Concealed: Zinc alloy, chemical protective film

### Notes

Concealed: Operated by 8mm hex wrench (not supplied)

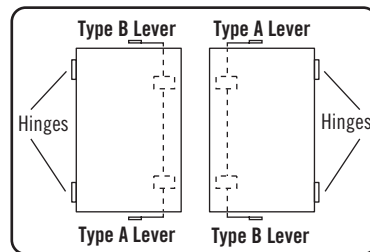
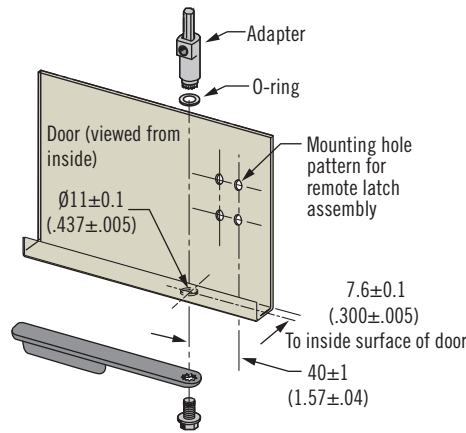
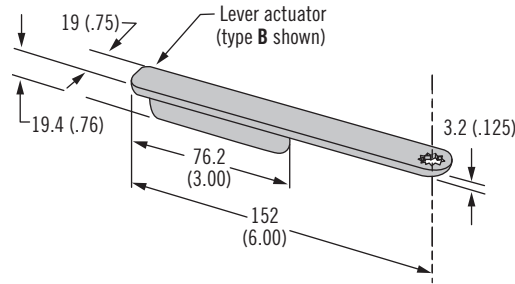
### Part Number

Actuator only see table

The complete system consists of:  
 Remote compression latch  
 Remote compression latch and/or optional keeper (see page 210)  
 Actuator (see pages 211-214)  
 Rods (see page 215)

Order each component separately

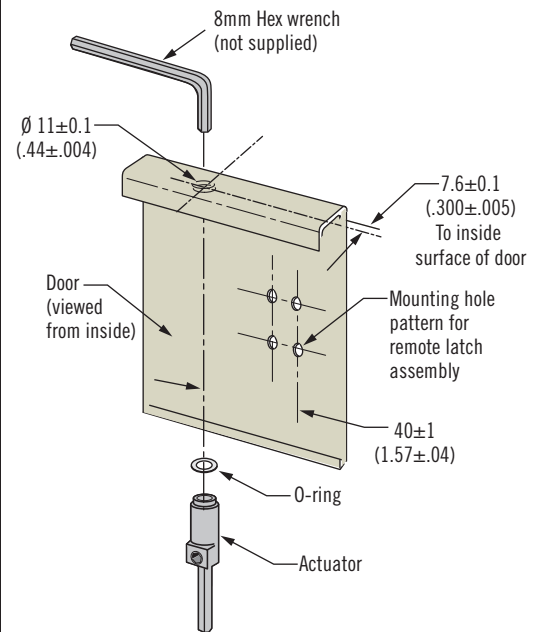
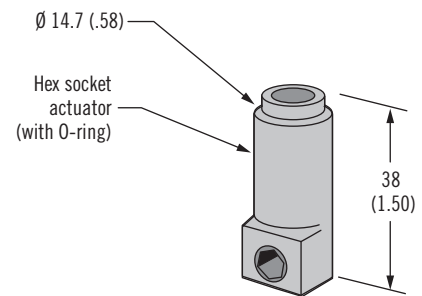
### Door Edge Lever



Viewed from outside

Actuator	Type	Part Number
Lever (includes adapter and O-ring)	A	M3-31
	B	M3-32

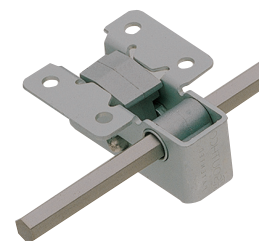
### Concealed



Actuator	Part Number
Hex socket with O-ring seal	M3-30

# M3 Compression System

## Rods and Calculator



### Material and Finish

Stainless steel, natural

### Notes

If you choose to use your own rods, they should have no more than 1 degree of twist in any meter length

### Part Number

Rod only see table

The complete system consists of:  
 Remote compression latch and/or optional keeper (see page 210)  
 Actuator (see pages 211-214)  
 Rods (see page 215)

Order each component separately

### Calculation Notes

Once you have completed the calculation please order the following parts:

- 1 x Actuator
- 1 or 2 rods to correct length
- Number of compression latches determined from calculation

### Hexagonal Rod

Hex Rod Length	Part Number
Hex rods (length measured in centimeters)	
125 cm	M3-125
155 cm	M3-155
185 cm	M3-185

### Calculator

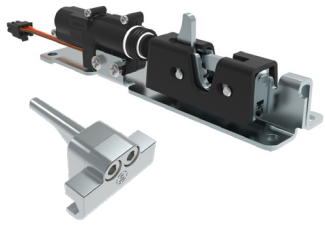
To determine the minimum number of remote compression latches you require along the door edge:

$$N = \frac{L \times R}{470}$$

N = Number of compression latches along door edge (rounded to the nearest whole number)  
 L = Total length of gasketing material in millimeters  
 R = Gasket compression rate in N / mm

**Example:**  $\frac{5200 \text{ mm} \times 0.3 \text{ N / mm}}{470} = 3.28 = 3 \text{ latches}$

Remote compression latches should be evenly spaced along edge of door



# M3 Compression System

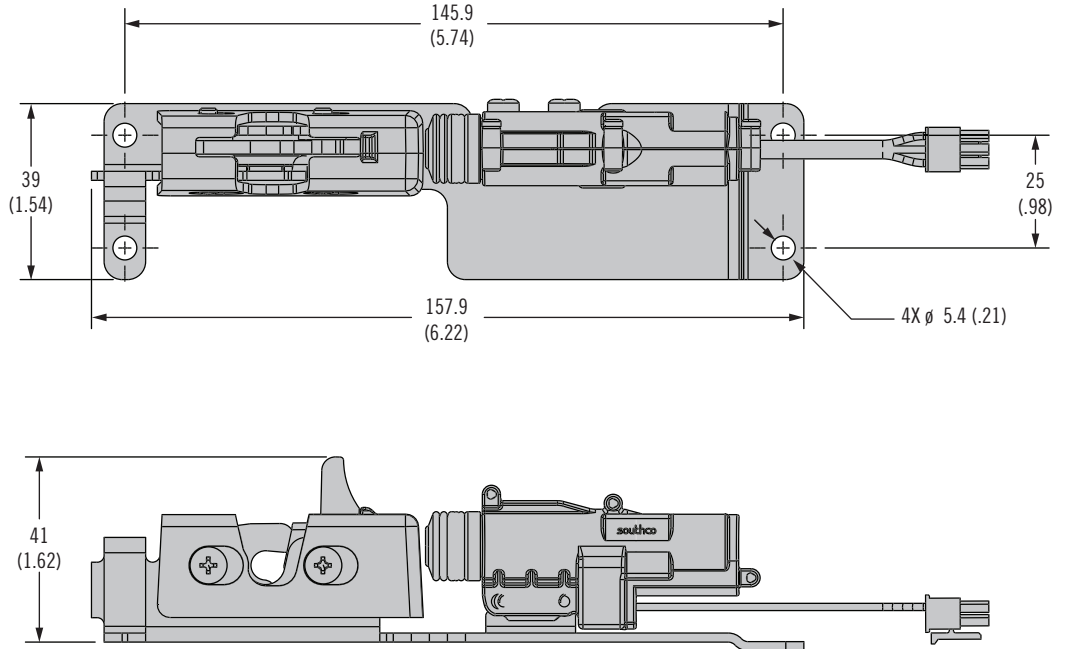
## Electronic Lock

- Electronically controlled locking
- Sealed for outdoor use
- Retrofit existing M3 systems without disassembly

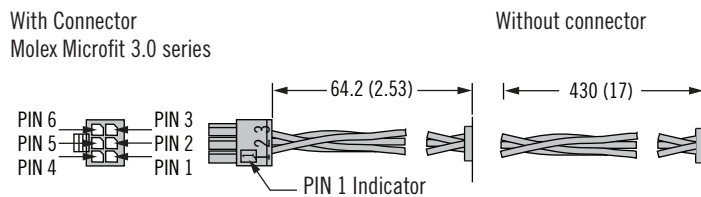
### Wire Color Code / Connector Pin Assignment:

- PIN 1: Extend (+), Orange Wire
- PIN 2: Retract (+), Red Wire
- PIN 3: Ground (-), Black Wire
- PIN 4: Not used
- PIN 5: Not used
- PIN 6: Not used

### Electronic Rotary Latch Mechanism



### Latch Wiring Connections



### Part Number

Latch Mechanism: See table  
 Striker: M3-58  
 Order latch and striker separately

### Part Number Selection

**R4 - 05 - 2 B - 4E C 1 - 20**

#### **B** Base Mounting Style

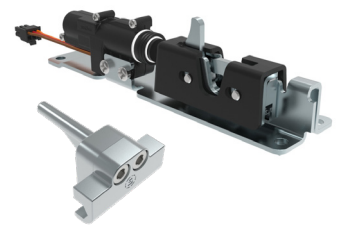
- 0** Thru holes
- 5** Adhesive backing

#### **C** Connector Options

- B** 12V, with connector
- F** 5V, with connector
- K** 12V, without connector
- P** 5V, without connector

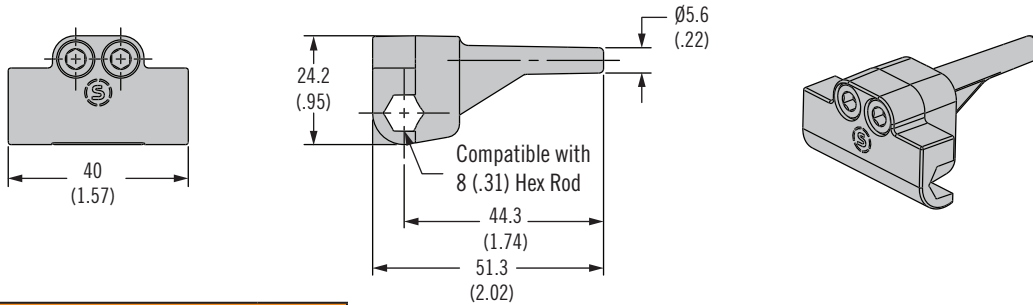


# M3 Compression System Electronic Lock



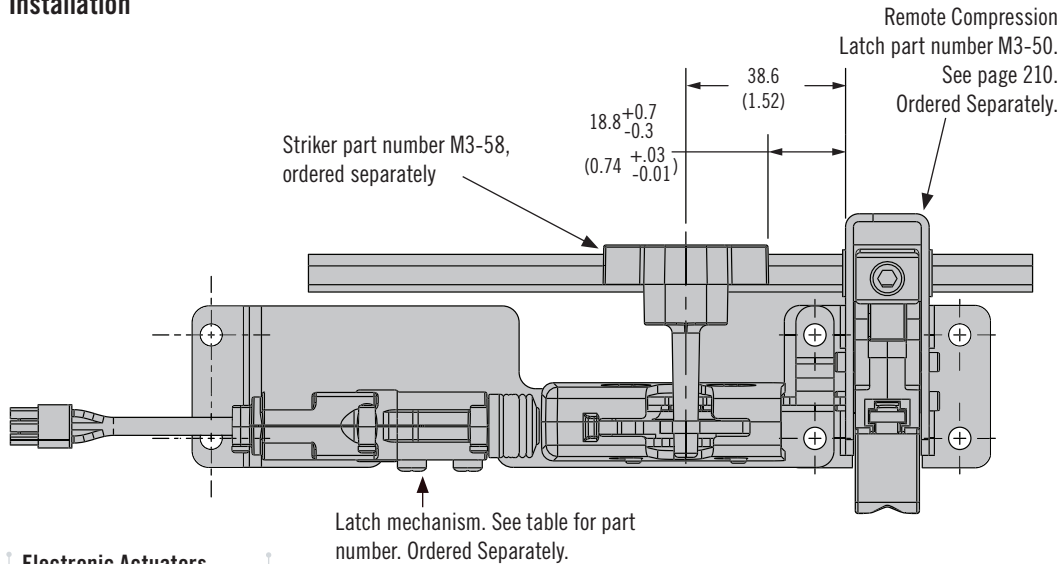
215B

## Hexagonal Rod Striker



Part Number	
Hexagonal Rod Striker	M3-58

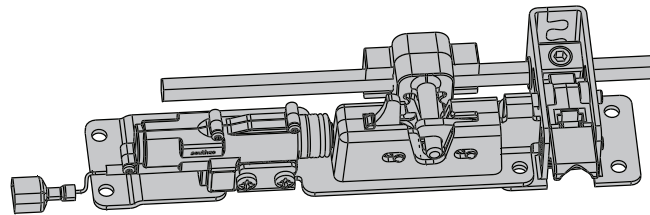
## Installation



Latch mechanism. See table for part number. Ordered Separately.

## Electronic Actuators

See page 48



## Material and Finish

- Latch Mechanism
- Housing: Stainless Steel
- Cam, trigger: Stainless Steel
- Springs: Steel, zinc plated
- Pins: Stainless Steel
- Electronic Actuator
- Enclosure, Output Cam: Nylon, Acetal
- House Assembly Screws: Stainless Steel
- Striker: Zinc, Chromate sealer

## Electronic Specifications

- Supply Voltage: 5 or 12VDC
- Operating Current: Less than 300 mA
- Operating Temperature: -20°C - 60°C
- Operating Humidity: 85% max  
No condensation

## Notes:

- Connector version uses Molex brand Microfit 3.0
- Visit [southco.com](http://southco.com) to download further installation and operation details.



# CR Compression System

## Swinghandle actuator

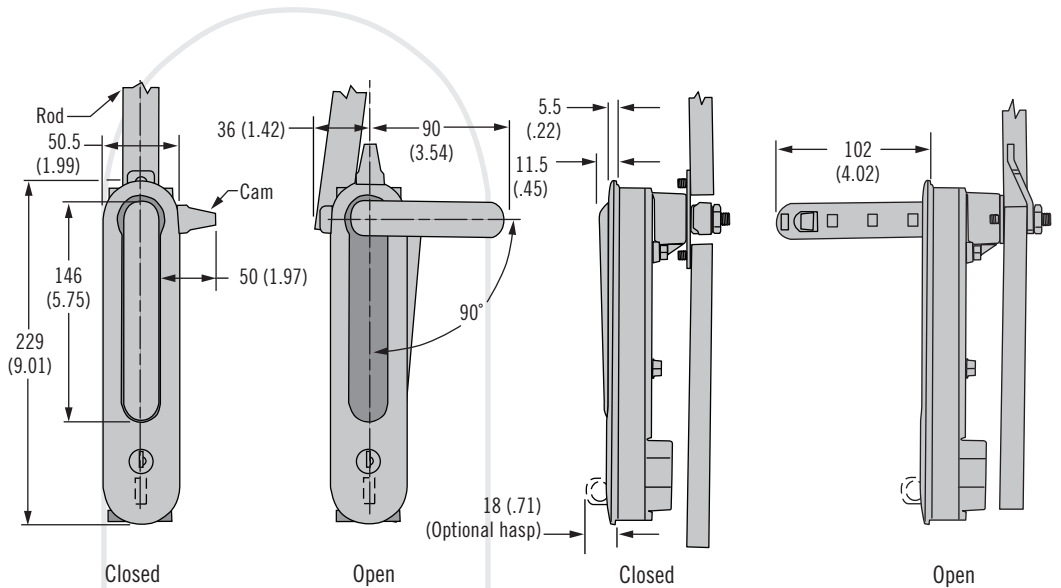
- Consistent compression
- Adjustable grip
- Meets NEMA 4 / IP66 and EMI standards

### Material and Finish

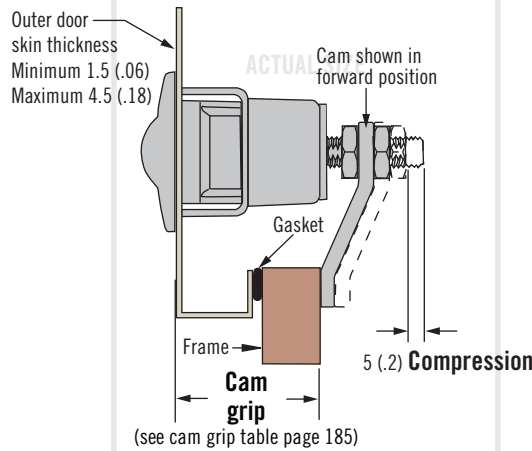
Handle actuator:  
Zinc alloy black powder coated  
Mounting hardware:  
Acetal black, stainless steel and brass

### Performance Details

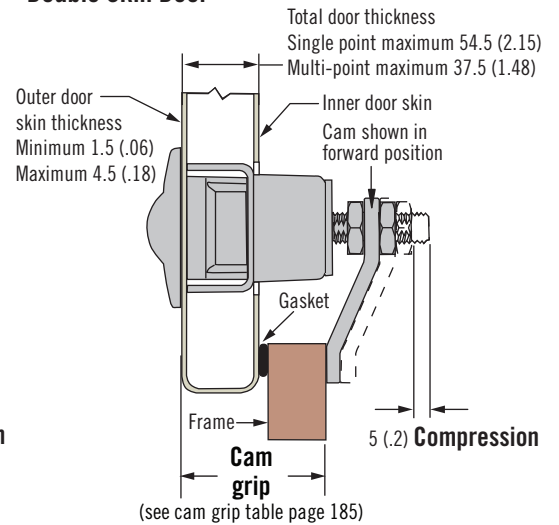
Maximum static load:  
500 N (110 lbf) per latch point  
Average ultimate load:  
1400 N (315 lbf)



### Single Skin Door



### Double Skin Door



### Part Number Selection

See table

Actuator only

The complete system consists of:  
Actuator (see part number selector)  
Cam (see page 217)  
Rod end (see page 218)  
Rods (see page 218)  
Rod guide (see page 218)  
Order each component separately

**CR - 19 - L - R 5**

#### L Lock style

- 11 Key-locking keyed alike CH751 (2 keys supplied)
- 21 Keylocking keyed alike CH751 (2 keys supplied) and padlock hasp
- 32 DIN 18354 profile keyed alike 347876 (3 keys supplied)
- 44 Bellcore electronics
- 45 Bellcore 216
- 54 Bellcore electronics and padlock hasp
- 55 Bellcore 216 and padlock hasp

#### R Rotation

- 1 Universal 180°
- 2 Counter-clockwise 90°
- 3 Clockwise 90°

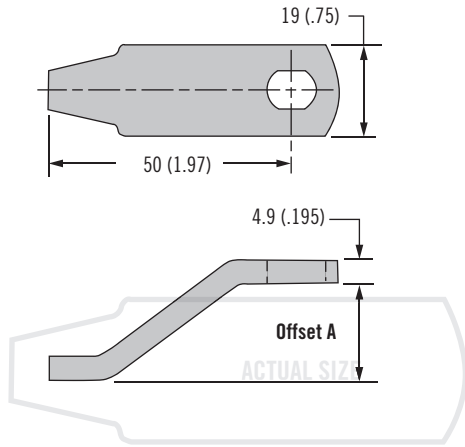
# CR Compression System

## Cam



### Cam

See page 216 for definition of cam grip



Cam Part Number	Offset A	Cam Grip Range	
		Cam Forward	Cam Reversed
CR-846-1000-24	0 (0.0)	56.5 - 62 (2.23 - 2.44)	
CR-846-1005-24	5 (.20)	51.5 - 57 (2.03 - 2.25)	61.5 - 67 (2.42 - 2.64)
CR-846-1010-24	10 (.39)	46.5 - 52 (1.83 - 2.05)	66.5 - 72 (2.62 - 2.84)
CR-846-1015-24	15 (.59)	41.5 - 47 (1.64 - 1.85)	71.5 - 77 (2.82 - 3.03)
CR-846-1020-24	20 (.79)	36.5 - 42 (1.44 - 1.66)	76.5 - 82 (3.01 - 3.23)
CR-846-1025-24	25 (.98)	31.5 - 37 (1.24 - 1.46)	81.5 - 87 (3.21 - 3.43)
CR-846-1030-24	30 (1.18)	26.5 - 32 (1.05 - 1.26)	86.5 - 92 (3.41 - 3.62)
CR-846-1035-24	35 (1.38)	21.5 - 27 (.85 - 1.07)	91.5 - 97 (3.60 - 3.82)
CR-846-1040-24	40 (1.58)	16.5 - 22 (.65 - .87)	96.5 - 102 (3.80 - 4.02)
CR-846-1045-24	45 (1.77)	11.5 - 17 (.46 - .67)	101.5 - 107 (3.99 - 4.22)
CR-846-1050-24	50 (1.97)	6.5 - 12 (.26 - .47)	106.5 - 112 (4.19 - 4.41)

### Material and Finish

Stainless steel

### Part Number

Cam see table

The complete system consists of:

Actuator (see page 216)

Cam (see page 217)

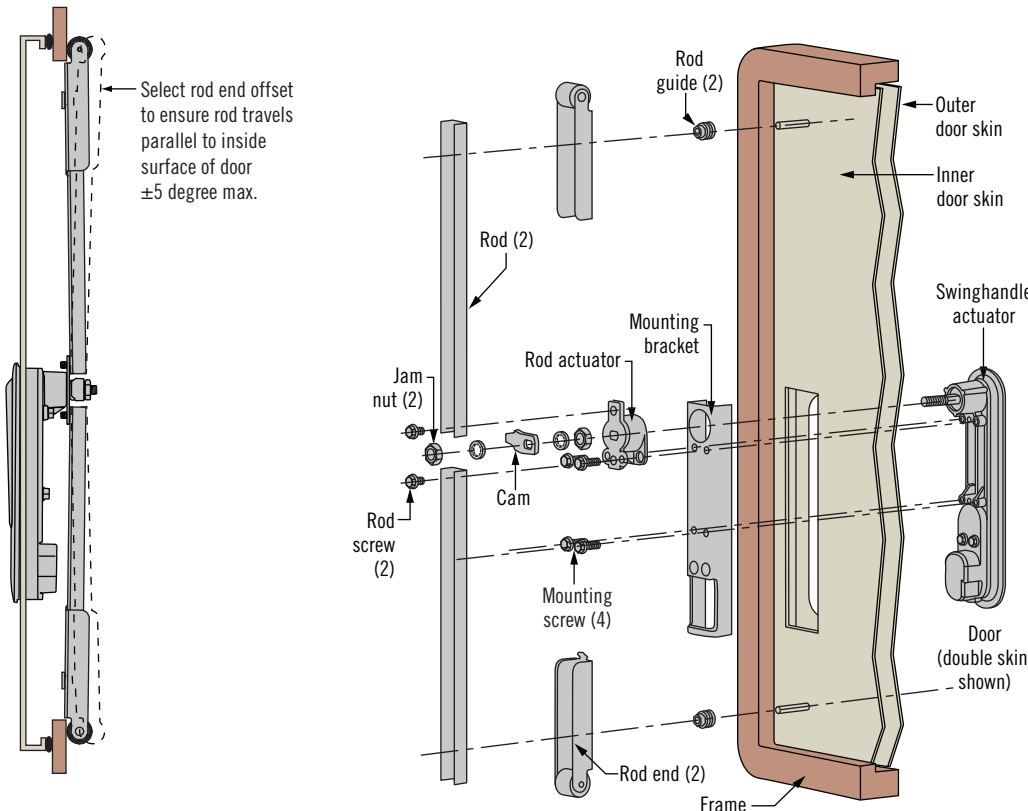
Rod end (see page 218)

Rods (see page 218)

Rod guide (see page 218)

Order each component separately

### Assembly





# CR Compression System

## Rod end · Rod · Rod guide · Installation

### Material and Finish

Rod end: Stainless steel and nylon, black  
 Rod: Aluminum  
 Rod guide: Brass

### Notes

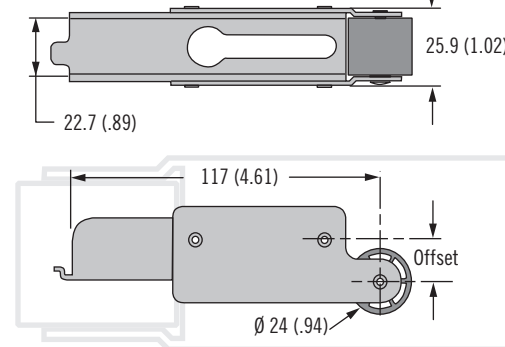
Rod end: When more than one rod end fits desired rod end grip range select the part number with the lowest offset value  
 Rod: Sold separately without mounting hole, in standard length of 1000 (39.37). Rod will need to be cut to desired lengths and mounting holes  $\varnothing 8.5$  (.33) drilled. Minimum 300 (11.81), Maximum 1000 (39.37)  
 Rod guide: M6 thread with prevailing torque for vibration resistance

### Part Number

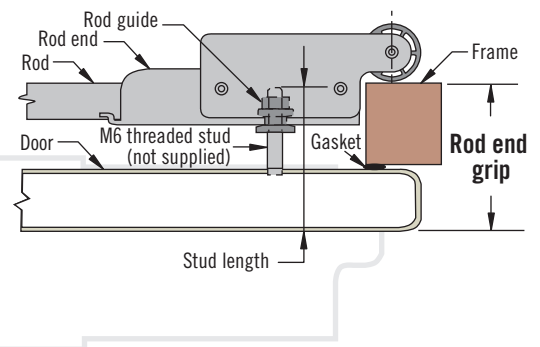
Rod end, rod and rod guides see tables

The complete system consists of:  
 Actuator (see page 216)  
 Cam (see page 217)  
 Rod end (see page 218)  
 Rods (see page 218)  
 Rod guide (see page 218)  
 Order each component separately

### Rod End - Negative offset shown



### Positive offset shown



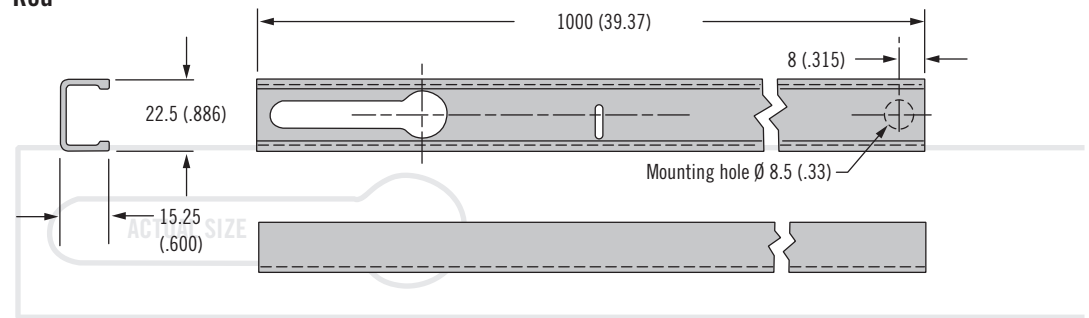
Rod End Grip when used with 1000 (39.37) rod	Offset	Formula for Stud Length Distance from front of door to the end of the threaded stud (not supplied)	Rod End Part Number
40 (1.57) Min. to 124 (4.88) Max.	+30 (1.18)	Rod end grip -16.5 (.65)	CR-51-30-24
25 (.98) Min. to 109 (4.29) Max.	+15 (.59)	Rod end grip -1.5 (.06)	CR-51-15-24
10 (.39) Min. to 94 (3.70) Max.	0 (0)	Rod end grip +13.5 (.53)	CR-50-01-24
5 (.20) Min. to 79 (3.11) Max.	-15 (.59)	Rod end grip +28.5 (1.12)	CR-52-15-24
5 (.20) Min. to 64 (2.52) Max.	-30 (1.18)	Rod end grip +43.5 (1.71)	CR-52-30-24

For your specific application requirement use Southco's online configurator, visit [www.southco.com/CR](http://www.southco.com/CR) or contact Southco

### Example:

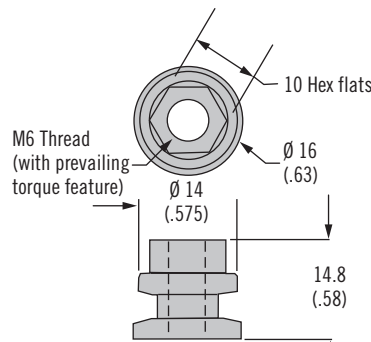
Rod end grip = 40 (1.57)  
 Rod end offset = +15 (.59)  
**Stud Length = 40 (1.57) - 1.5 (.06) = 38.5 (1.51)**

### Rod



Rod Part Number
CR-64-1000-50

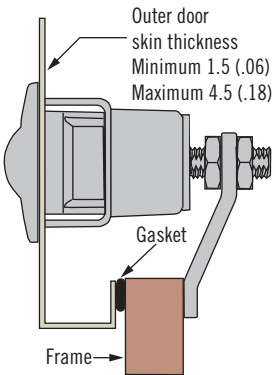
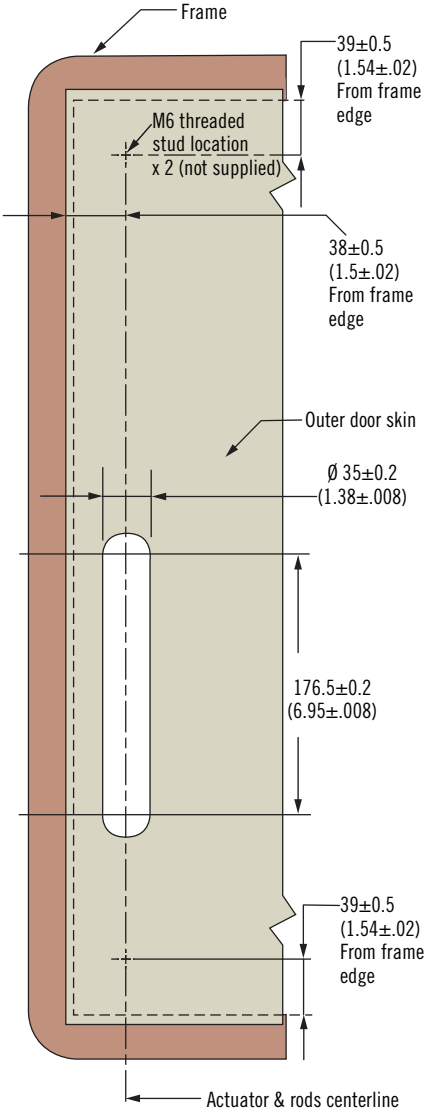
### Rod Guide



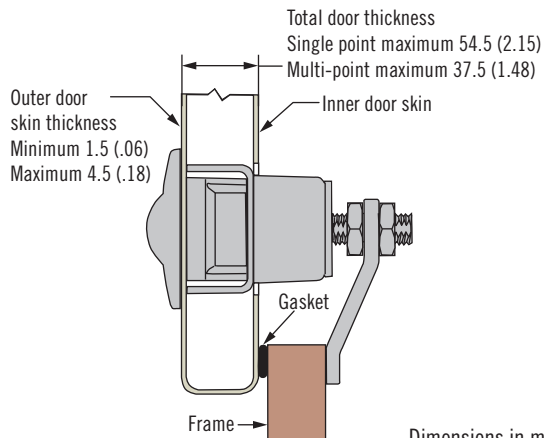
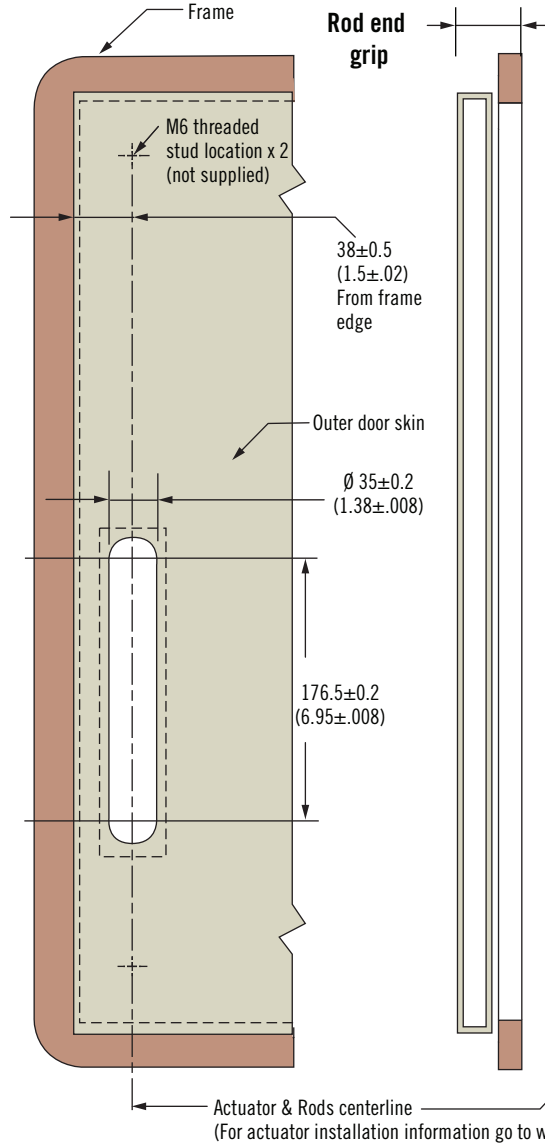
Rod Guide Part Number
CR-843-01-26

### Installation

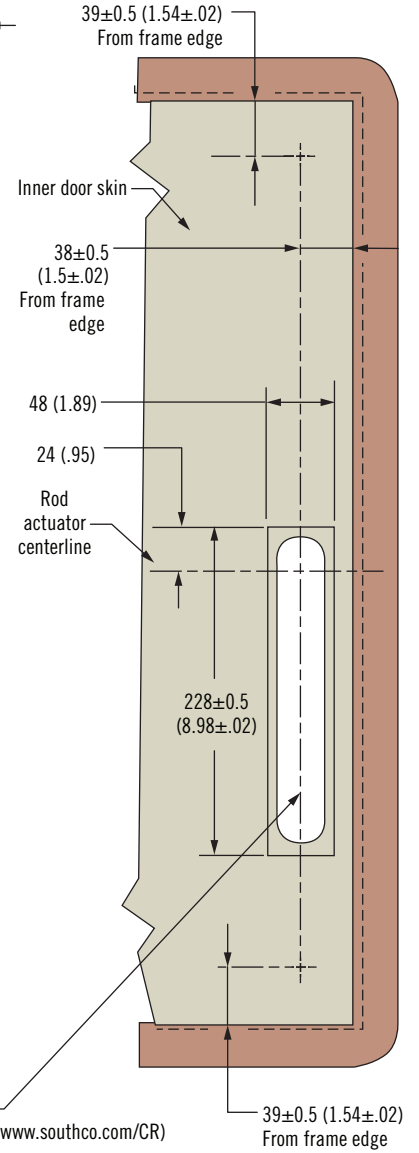
Single Skin Door  
View From Front

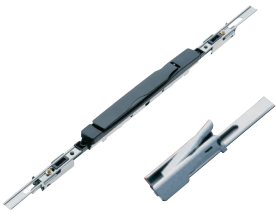


Double Skin Door  
View From Front



View From Rear





## F2 Compression System

### System integration

- Designed for indoor enclosures
- Operates outside the enclosure's seal
- Installs close to the door edge
- System engages when door is up to 15 mm (.59 in) away from the closed position

#### Notes

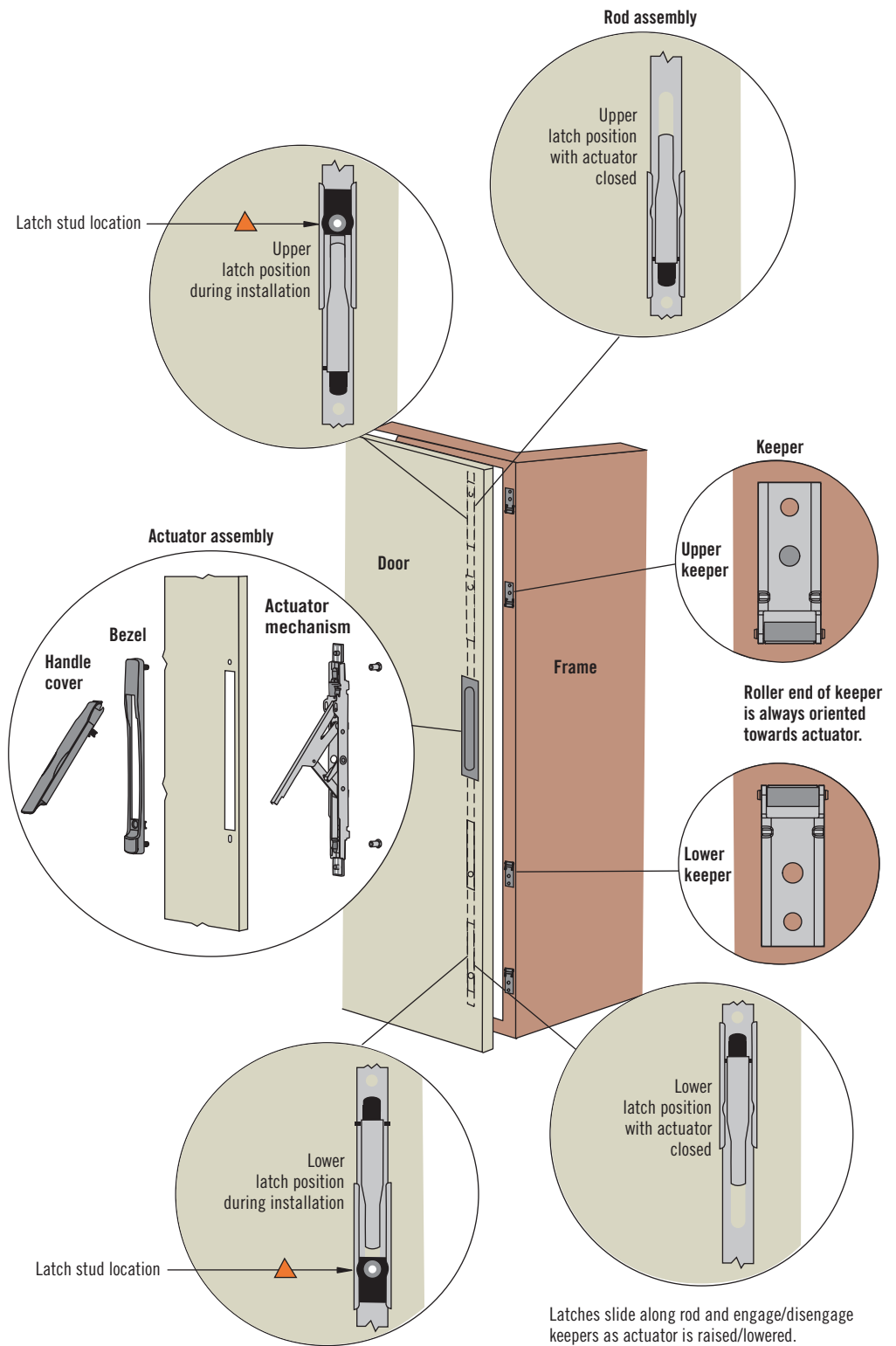
One complete system consists of:

One actuator assembly  
(see page 221)

Two rod assemblies  
(see pages 222-223)

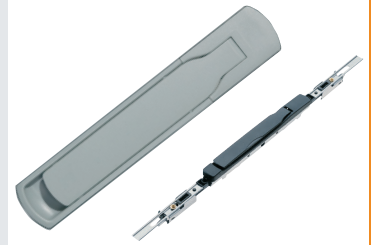
Keepers (quantity depends on no. of latches specified; see page 223)

Order each component separately

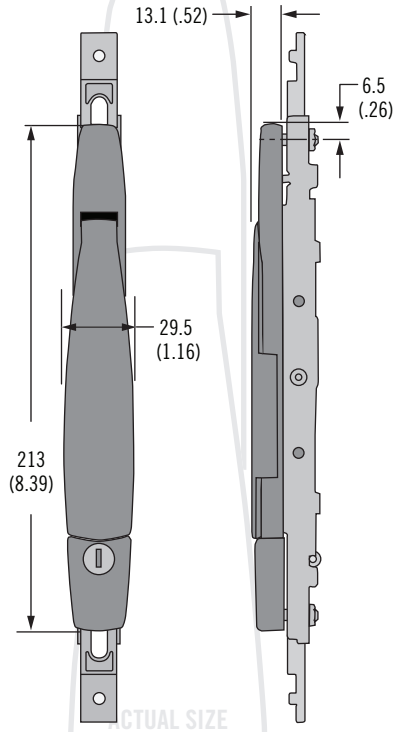


# F2 Compression System

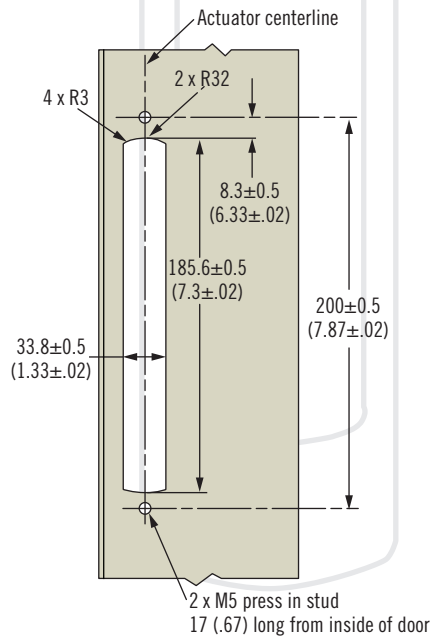
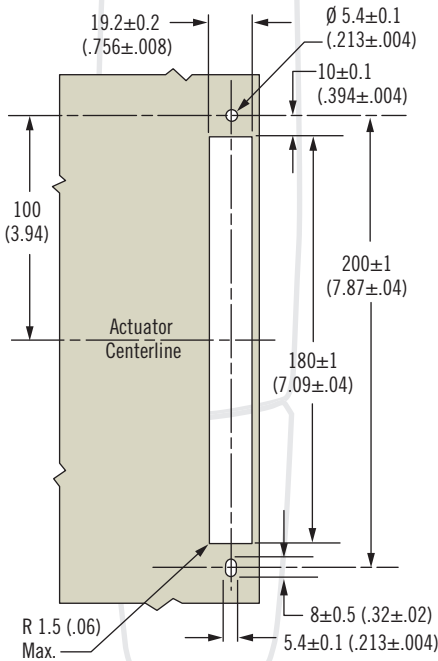
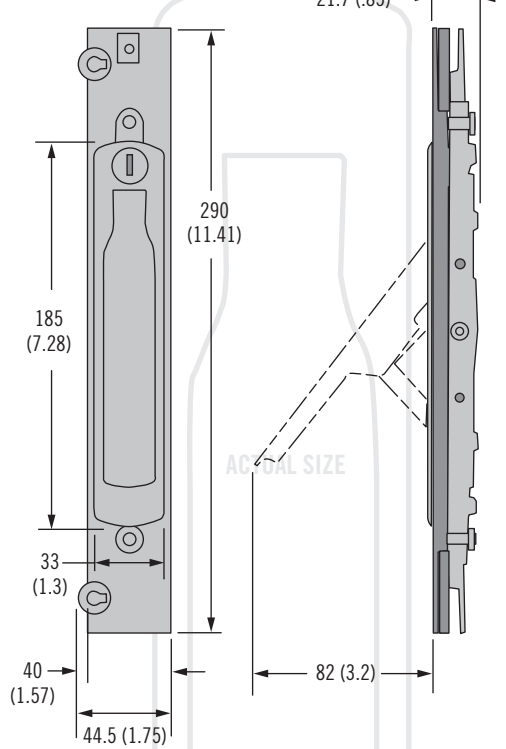
## Surface and flush actuators



### Surface Actuator



### Flush Actuator



- Designed for indoor enclosures
- Operates outside the enclosure's seal
- System engages when door is up to 15 mm (.59 in) away from the closed position

### Material and Finish

PC/ABS plastic, black  
Zinc alloy and steel, zinc plated

### Performance Details

Max. static load:  
100 N (22 lbf) per latch point  
500 N (112 lbf) for entire system  
Flammability rating:  
UL94-V0 for all plastic components

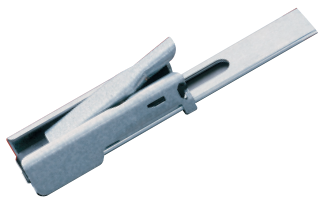
### Accessories

Flat key keyed alike CH751  
(2 keys per ring)  
Part number: PK-10-01  
Overmolded key keyed alike CH751  
(2 keys per ring)  
Part number: PK-10-01-05  
Plain key SC001 (2 keys per ring)  
Part number: FK-KEY-SC001

### Part Number

Actuator only see table  
One complete system consists of:  
One actuator assembly  
(see page 221)  
Two rod assemblies  
(see pages 222-223)  
Keepers (quantity depends on no. of  
latches specified; see page 223)  
Order each component separately

Lock Style	Surface Actuator Part Number	Flush Actuator Part Number
Non-locking	F2-20-17	F2-20-12
Key-locking keyed alike SC001 (two keys supplied)	F2-20-18	F2-20-13
Key-locking keyed alike CH751 (two keys supplied)	F2-20-19	~



# F2 Compression System

## Rod assembly · High compression

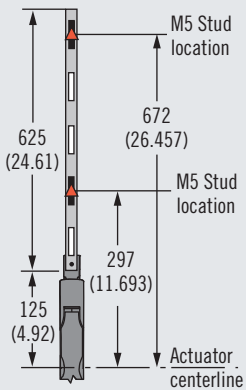
- Multiple lengths and latching point locations
- Latching mechanisms engage keepers when door is up to 15 mm (.59 in) away from the closed position

### Material and Finish

PC/ABS plastic black, zinc alloy and steel, zinc plated

### Installation Notes

Latch installation stud is not supplied. Use M5 press-in studs or non-flanged weld studs. Length is 6 (.24) to 10 (.39) Maximum, measured from inside surface of the door. Example: F2-10-625-25



Stud must be positioned within 0.2 (.008) of nominal

### Part Number

High compression rod assembly only see table

One complete system consists of:

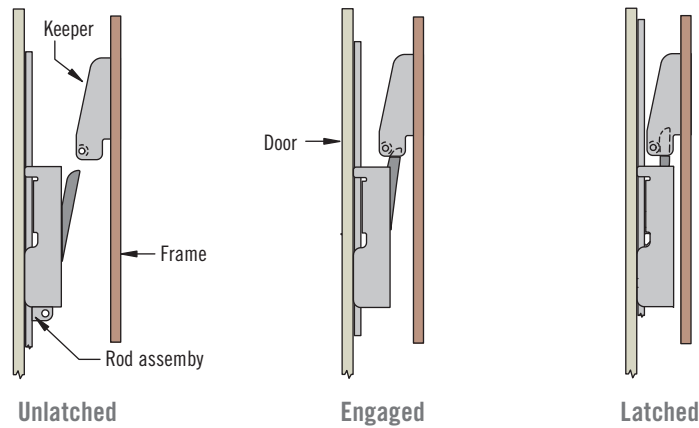
One actuator assembly (see page 221)

Two rod assemblies

(see pages 222-223)

Keepers (quantity depends on no. of latches specified; see page 223)

Order each component separately



Rod Length	Latch Installation Stud Locations from Centerline of Actuator	Part Number								
		F2-10-125-1	F2-10-250-2	F2-10-375-3	F2-10-375-13	F2-10-500-14	F2-10-625-25	F2-10-750-26	F2-10-750-36	F2-10-875-37
125 (4.92)	172 (6.772)									
250 (9.84)	297 (11.693)									
375 (14.76)	422 (16.614)									
500 (19.69)	547 (21.535)									
625 (24.61)	672 (26.457)									
750 (29.53)	797 (31.378)									
875 (34.45)	922 (36.299)									

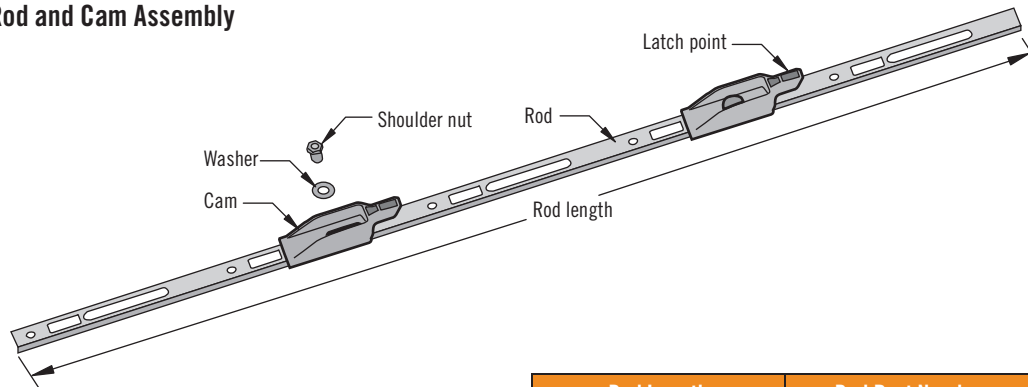


# F2 Compression System

## Rod assembly · Flexible



### Rod and Cam Assembly



Rod Length	Rod Part Number
125 (4.92)	F2-11-125-19
250 (9.84)	F2-11-250-19
375 (14.76)	F2-11-375-19
500 (19.69)	F2-11-500-19
625 (24.61)	F2-11-625-19
750 (29.53)	F2-11-750-19
875 (34.45)	F2-11-875-19

Cam Assembly Part Number	
Hardware pack assembly contains 1 x cam, washer and shoulder nut (order 1 hardware pack per latching point)	F2-50-1

- Flexible mounting options

### Material and Finish

Glass-filled nylon black, brass and steel, zinc plated

### Part Number

Rod and cam assembly only see table  
The complete system consists of:  
One actuator assembly (see page 221)  
Two rod assemblies (see pages 222-223)  
Keepers (quantity depends on no. of latches specified; see page 223)  
Order each component separately

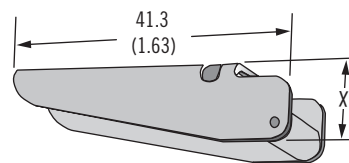
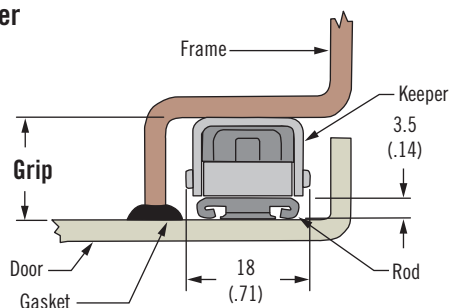
[www.southco.com/F2](http://www.southco.com/F2)

# F2 Compression System

## Keeper



### Keeper



- Keeper roller provides for smooth operation

### Notes

Order one keeper per latching point

### Part Number

Keeper only see table  
One complete system consists of:  
One actuator assembly (see page 221)  
Two rod assemblies (see pages 222-223)  
Keepers (quantity depends on no. of latches specified; see page 223)  
Order each component separately

Grip	Part Number	X	Rod System Compatibility	
			High Compression	Flexible
15 (.59)	F2-30-15	11.5 (.45)	<input type="checkbox"/>	~
19 (.75)	F2-30-19	15.5 (.61)	<input type="checkbox"/>	<input type="checkbox"/>
20 (.79)	F2-30-20	16.5 (.65)	<input type="checkbox"/>	<input type="checkbox"/>
22 (.87)	F2-30-22	18.5 (.73)	<input type="checkbox"/>	<input type="checkbox"/>
25 (.98)	F2-30-25	21.5 (.85)	<input type="checkbox"/>	<input type="checkbox"/>



# H3 Swinghandle System

Medium / large · Sealed / non-sealed

- Zinc alloy swinghandle system
- Multiple locking options; including DIN profile
- Indoor/outdoor version
- Available for medium (125mm x 25mm) and large (150mm x 25mm) door cutout
- Linear and rotational systems available

## Material and Finish

Handle: Zinc alloy, black powder coated or satin chrome plated  
Cam: Steel, zinc plated

## Performance Details

Maximum static load: 250 N (56 lbf)

## Sealing Notes

Sealed version meets NEMA 4/IP66 water intrusion standards

## Keys

See page 120

## Notes

Key removal in unlocked position only available on non-sealed version

Product available to meet **TELCORDIA® GR-487** contact Southco for details

Electromechanical swinghandle available see pages 40-41

For single point and actuator plate system see pages 186-187

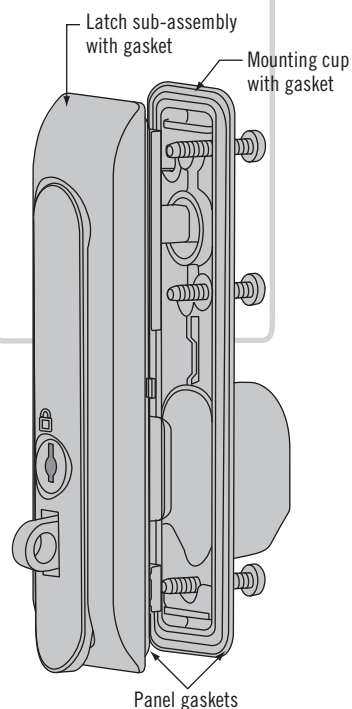
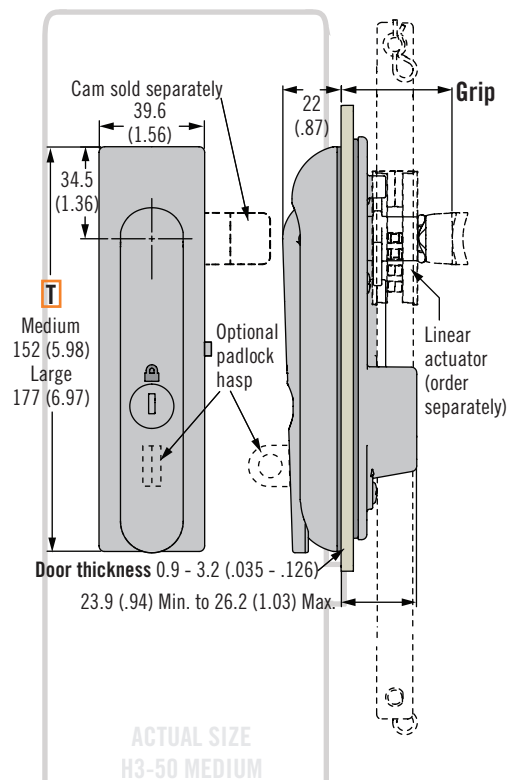
For dimension details of DIN lock version, please contact Southco

For plastic version see page 228.

**TELCORDIA** is a registered trademark of Telcordia Technologies Inc.

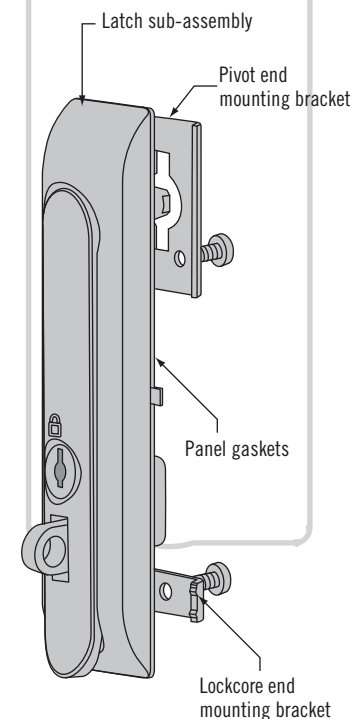
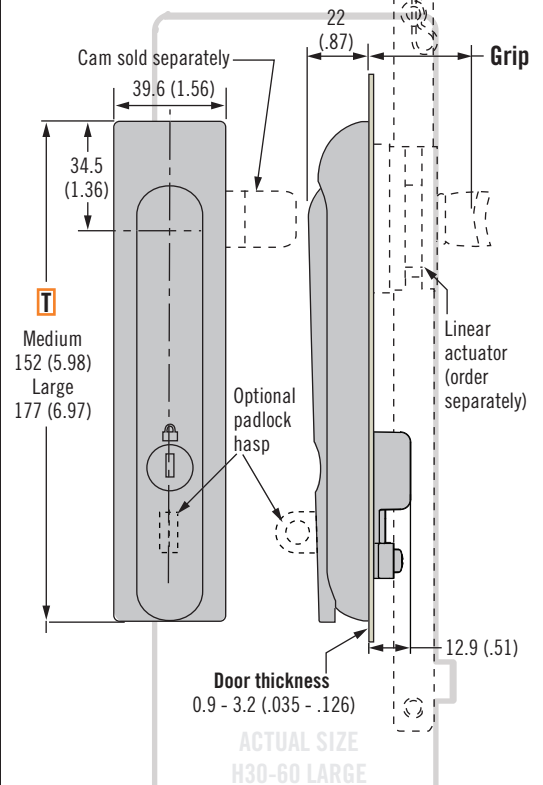
## Sealed (H3-50 medium shown)

(Also available in large. See part number selection)



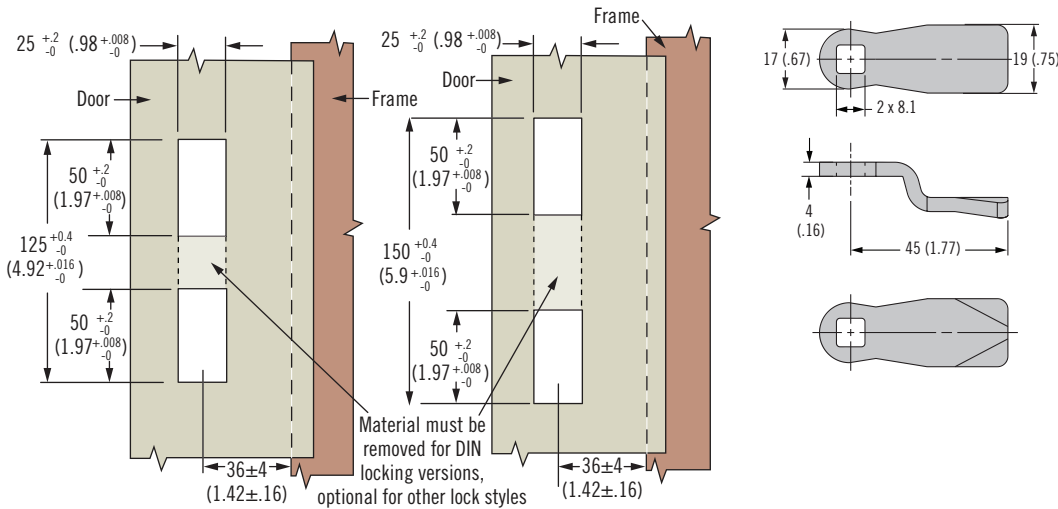
## Non-Sealed (H3-60 large shown)

(Also available in medium. See part number selection)



**Medium H3-50**

**Large H3-60**



**Part Number Selection**

For single point:  
Order latch and cam separately  
(see page 186-187)

For multi-point order:  
Latch and cam (if 3 point latching  
required)

Linear actuator and rod adaptors  
(see page 226)

Rods (see pages 230-233)

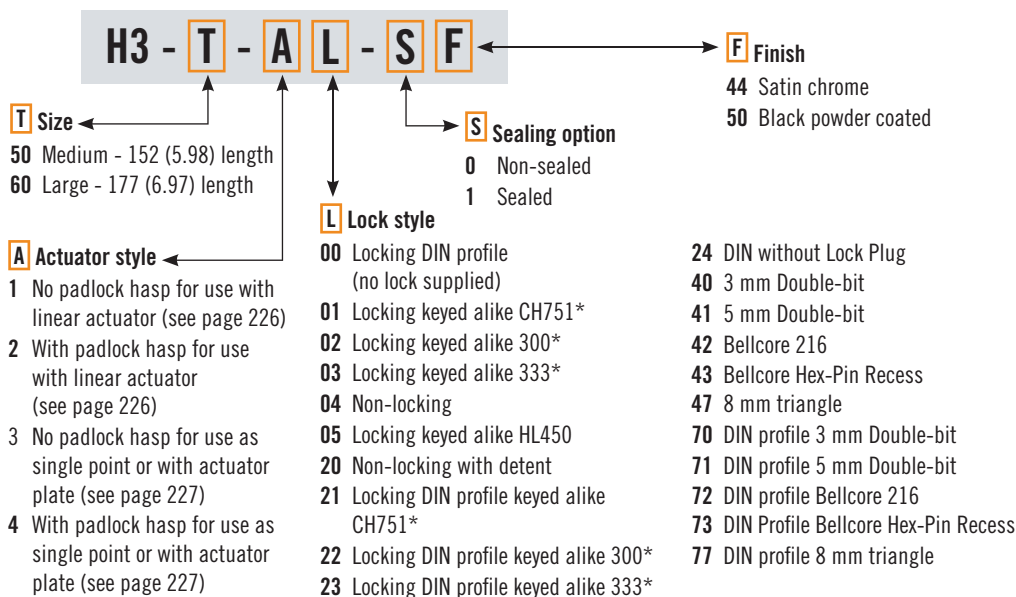
Rod guides (see pages 230-233)

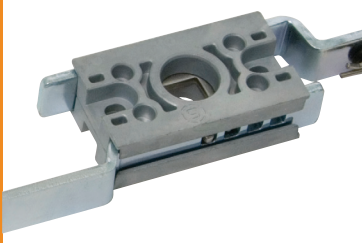
**Note**

\*2 Overmolded keys supplied

Cam Part Number Table For Use With Linear Actuator Or Actuator Plate					
Grip With Linear Actuator	Grip With Actuator Plate	Part Number	Grip With Linear Actuator	Grip With Actuator Plate	Part Number
~	10.3 (.41)	E5-6107	36.9 (1.45)	26.3 (1.04)	E5-6115
~	12.3 (.48)	E5-6108	38.9 (1.53)	28.3 (1.11)	E5-6116
24.9 (.98)	14.3 (.56)	E5-6109	40.9 (1.61)	30.3 (1.19)	E5-6117
26.9 (1.06)	16.3 (.64)	E5-6110	42.9 (1.69)	32.3 (1.27)	E5-6118
28.9 (1.14)	18.3 (.72)	E5-6111	44.9 (1.76)	34.3 (1.35)	E5-6119
30.9 (1.22)	20.3 (.80)	E5-6112	46.9 (1.85)	36.3 (1.43)	E5-6120
32.9 (1.30)	22.3 (.88)	E5-6113	48.9 (1.93)	38.3 (1.51)	E5-6121
34.9 (1.37)	24.3 (.96)	E5-6114	50.9 (2.00)	40.3 (1.59)	E5-6122

**Latch Part Number (no cam)**





# H3 Linear Actuator

## Linear actuator and rod adaptor

- Linear actuator for H3 swinghandles
- Linear rod travel for limited space
- Suitable for left and right hand applications

### Material and Finish

Zinc alloy and steel, zinc plated

### To Select Linear actuator and Rod Adaptor:

For use with H3-50 and H3-60 swinghandles (see pages 224-225)  
Order linear actuator and rod adaptors separately (1 actuator and 2 adaptors required per latch)

### Accessories

Replacement rod adaptor retainer pin part number: H3-0-44778-01

### Part Number

Linear actuator and rod adaptors see table

For multi-point order:

Latch (see pages 224-225)

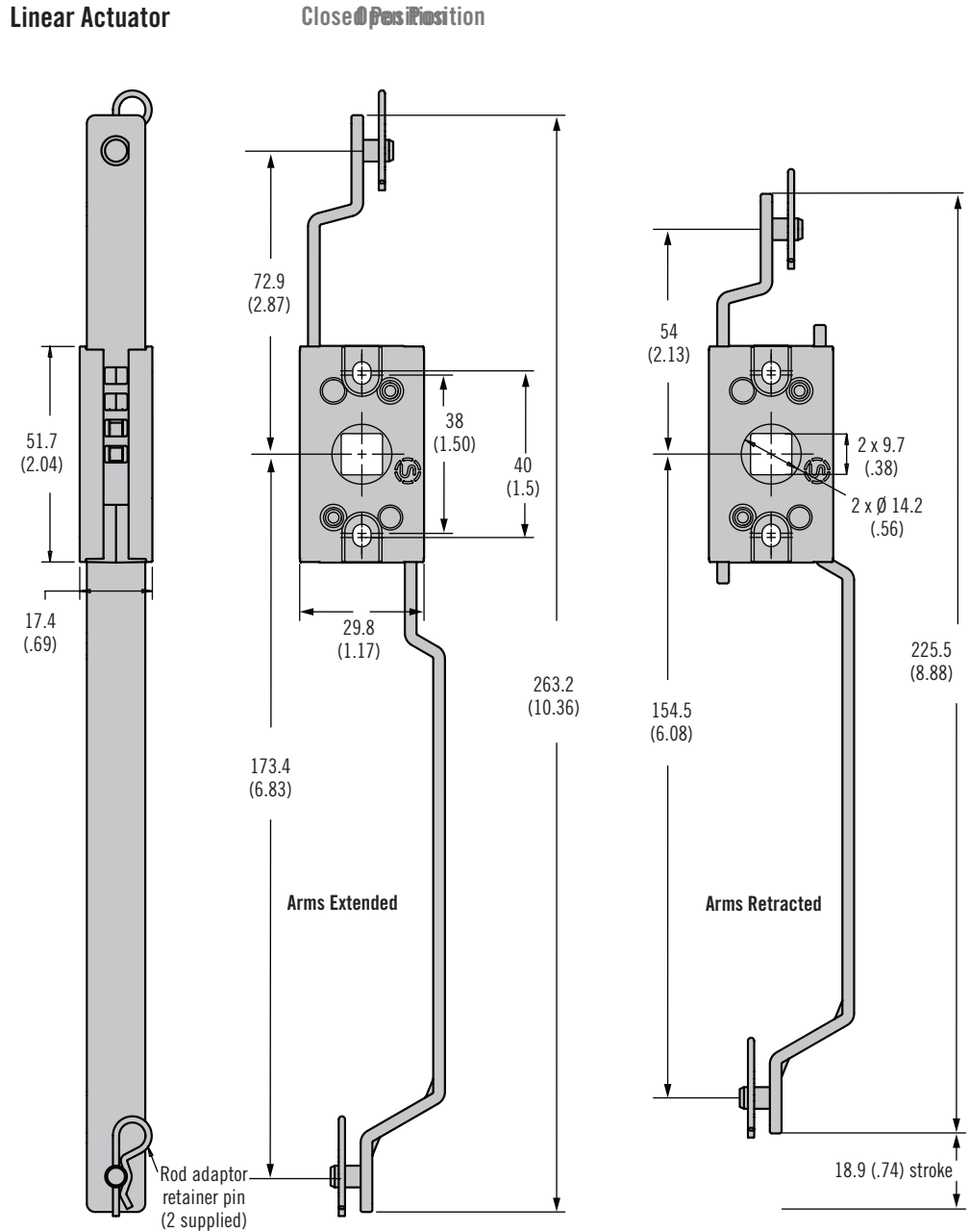
Cam (if 3 point latching required) (see page 225)

Linear actuator and rod adaptor (see table)

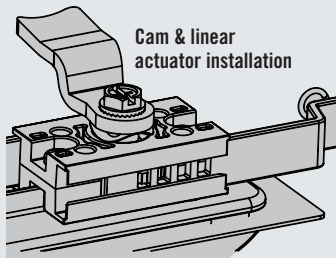
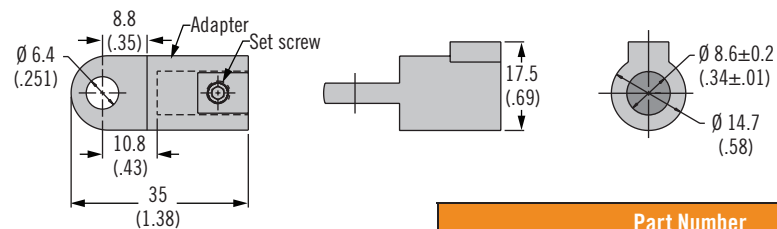
Rods (see pages 230-233)

Rod guides (if required) (see page 230)

### Linear Actuator



### Rod Adaptor



Part Number	
Linear actuator	H3-51-40
Rod adaptor	A5-92-201-31

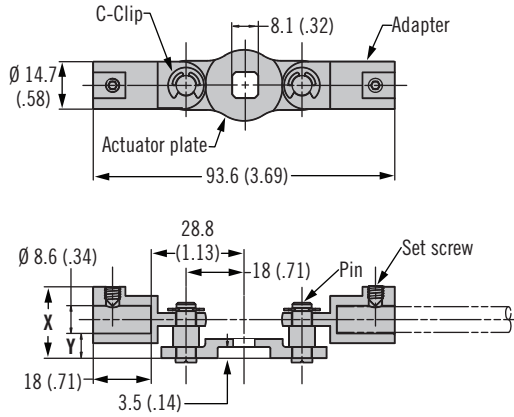
# A5 Modular System

## Actuator plates

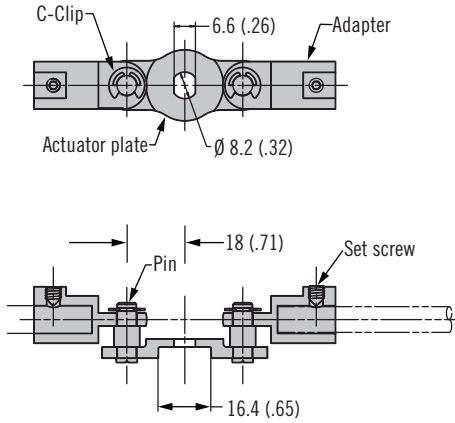


### Actuator Plate

#### A5-90-101-11

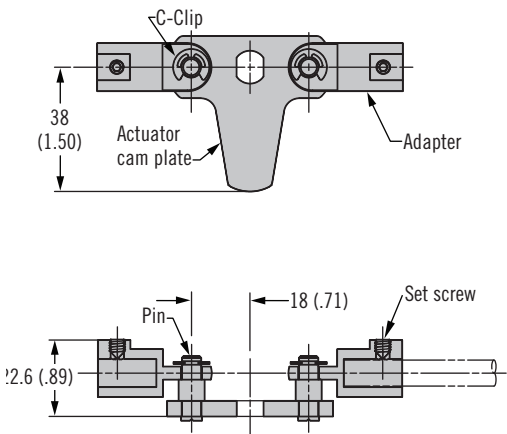


#### A5-90-301-11

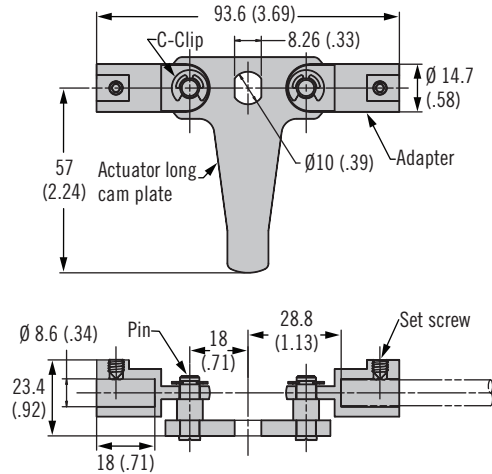


Part Number	X	Y
A5-90-101-11	22.2 (0.87)	4.7 (0.18)
A5-90-104-11	25.2 (0.99)	7.7 (0.30)
A5-90-401-11	22.6 (0.89)	5.1 (0.20)
A5-90-501-11	23.4 (0.92)	5.9 (0.23)

#### A5-90-401-11 (Short Cam)



#### A5-90-501-11 (Long Cam)



Actuator Plate Part Number						
Operating Latch Families						
		Page 152-168		Page 224-225		Page 133
Actuator Plate Part Number	A5-90-101-11			A5-90-301-11	A5-90-401-11	A5-90-501-11

- Modular actuators to suit multiple latch families using A5 modular rods

### Material and Finish

Zinc alloy, steel, zinc plated and stainless steel set screw

### To Select Correct Actuator:

1. Choose actuator plate to match latch family (one per latch required)
2. Order rods and rod guides from page 230

### Part Number

Actuator plate see table  
 Rods (see page 230)  
 Rod guides (see page 230)



# H3 Swinghandle System

Plastic · Large · Non-sealed

- Lightweight Glass filled nylon swinghandle system UL94-V0 rated
- DIN profile locking options
- Push or turn to close versions available

### Material and Finish

Handle: Glass filled nylon  
Cam: Steel, zinc plated

### Performance Details

Max. static load: 250 N (56 lbf)

### Keys

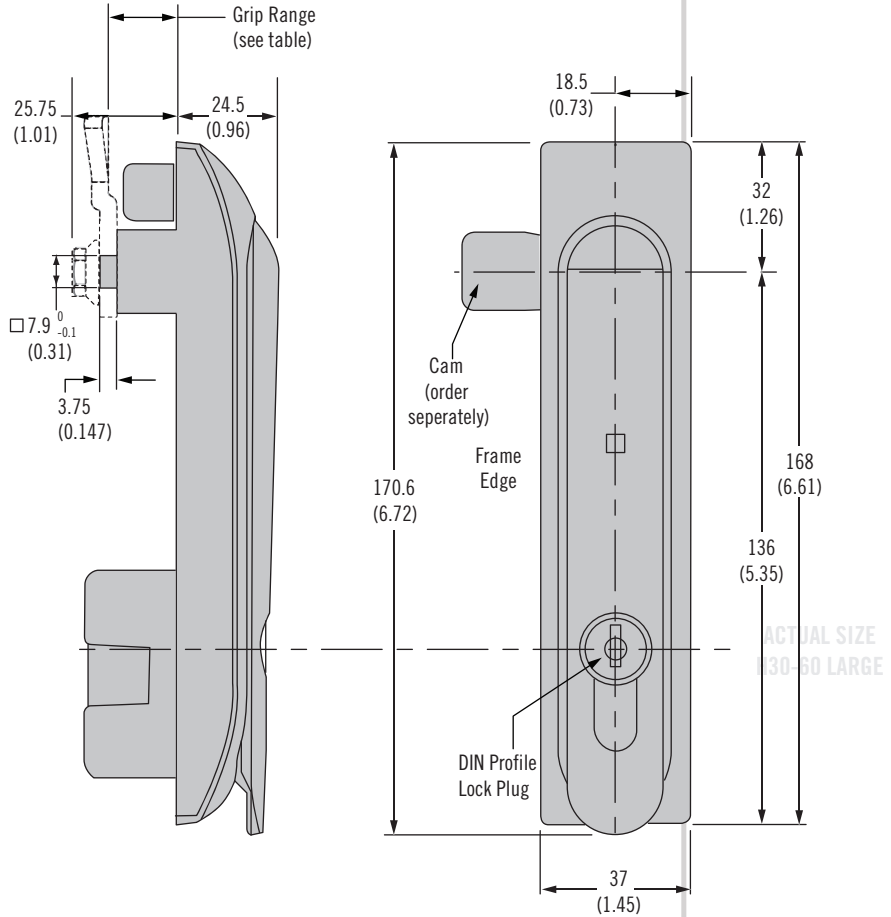
See page 120

### Notes

Electromechanical swinghandle available see pages 40-41

For metal version visit pages 186-187 and 224-225

## H3 Plastic Swinghandle



### Part Number Selection

For single point:  
Order latch and cam separately

For multi-point order:  
Latch and cam  
Linear actuator and rod adaptors  
Rods  
Rod guides

### Note

\*2 keys supplied

### Latch Part Number (no cam)

**T** Style

- 65 Push to close handle
- 66 Turn to close handle

**L** Lock style

- 00 Locking DIN profile (no lock supplied)
- 21 Locking DIN profile keyed alike CH751\*
- 22 Locking DIN profile keyed alike 300\*
- 23 Locking DIN profile keyed alike 333\*
- 70 DIN profile 3 mm Double-bit
- 71 DIN profile 5 mm Double-bit
- 72 DIN profile Bellcore 216
- 73 DIN Profile Bellcore Hex-Pin Recess
- 77 DIN profile 8 mm triangle

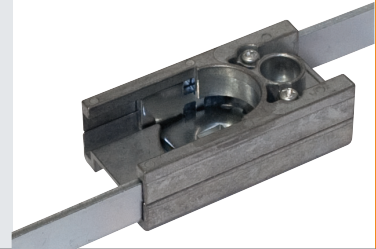
**H3 - T - 5 L - 071**

### Cam Part Number Table

Grip	Part Number (length = 38mm)	Part Number (length = 45mm)
15.5 (.61)	E5-6710	E5-6110
17.5 (.69)	E5-6711	E5-6111
19.5 (.77)	E5-6712	E5-6112
21.5 (.85)	E5-6713	E5-6113
23.5 (.93)	E5-6714	E5-6114
OTHER	Please contact Southco	

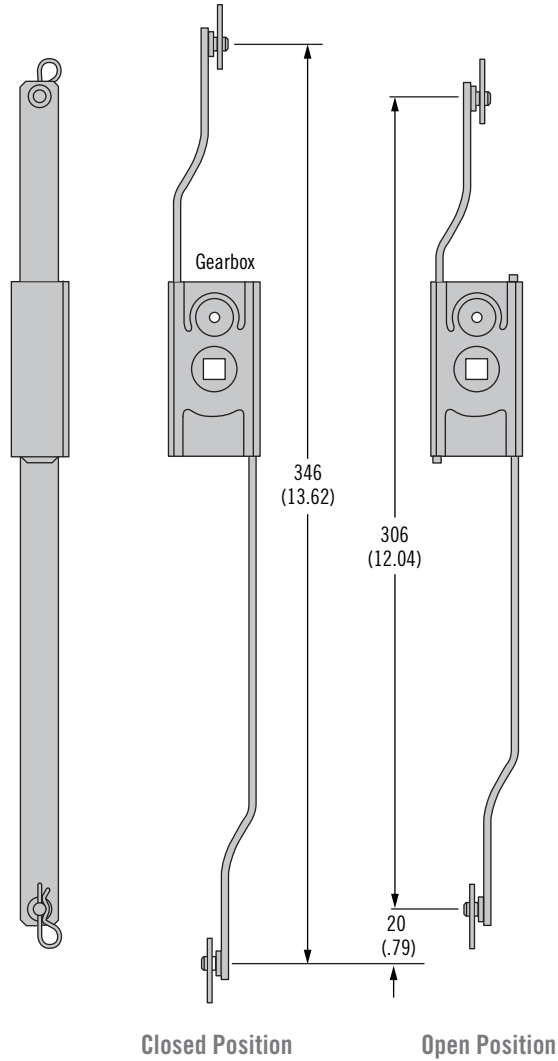
# H3 Linear Actuators

Linear actuators and rod adaptor for plastic H3 swinghandle system

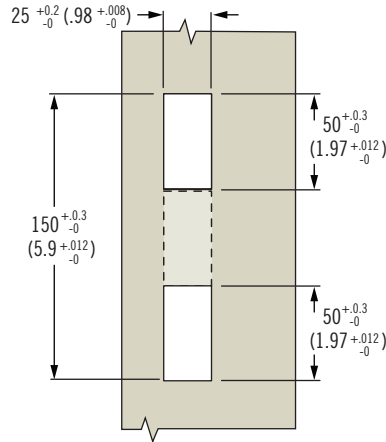


## Linear Actuator

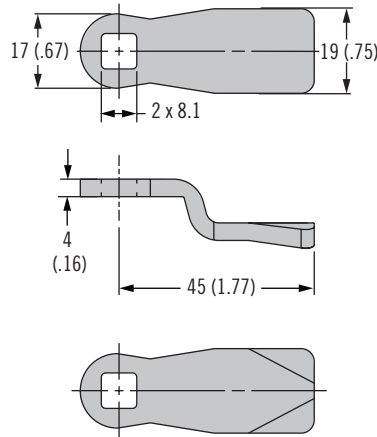
(Right Hand Mounting shown)



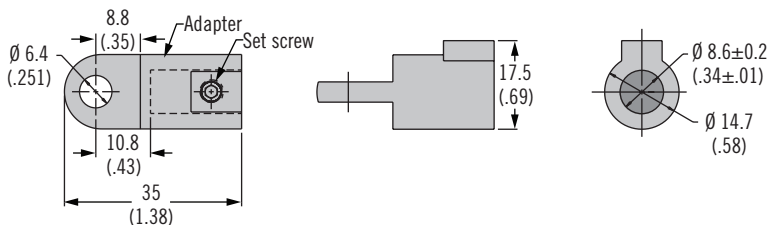
## Panel Preparation



## Cam



## Rod Adaptor



- Linear actuator for Plastic H3 swinghandles
- Linear rod travel for limited space
- Suitable for left and right hand applications
- Left and Right hand Actuators can be disassembled and reassembled in the opposite hand if required

## Material and Finish

Zinc alloy and steel, zinc plated

## To Select Linear actuator and Rod Adaptor:

For use with H3-EM, H3-65 and H3-66 swinghandles. Order linear actuator and rod adaptors separately (1 actuator and 2 adaptors required per latch)

## Accessories

Replacement rod adaptor retainer pin part number: H3-0-44778-01

## Part Number

Linear actuator and rod adaptors see table

For multi-point order: Latch Cam (if 3 point latching required) Linear actuator and rod adaptor (see table)

Rods, Rod guides

Part Number	
Linear actuator right hand mounting	H3-61-56-33
Linear actuator left hand mounting	H3-61-55-33
Rod adaptor	A5-92-201-31



# A5 Modular System

## Rods and rod guides

### • Modular rod and rod guides

#### Material and Finish

Rods: Aluminum or steel, zinc plated  
 Rod rollers: Glass-filled nylon, black  
 Rod guides: Glass-filled nylon, black with steel, zinc plated hardware

#### To Select Correct Assembly:

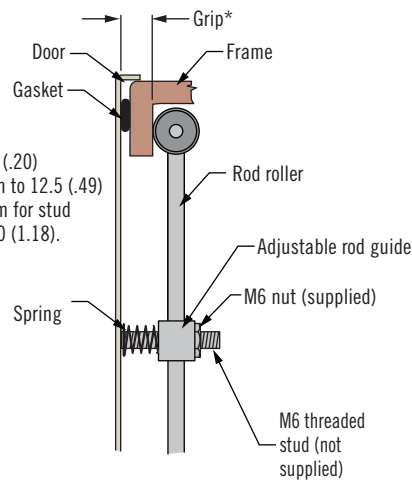
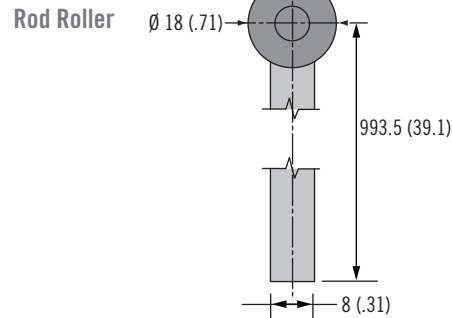
1. Choose actuator plate to match latch family or linear actuator and 2 adaptors. See drawing J-A5-F30 for rod type and latch family compatibility.
2. Order rod guides (2 per assembly). Fixed rod guide recommended for fixed point rod. Adjustable rod guide recommended for rod roller assembly.
3. Order rods (2 per assembly)

#### Part Number

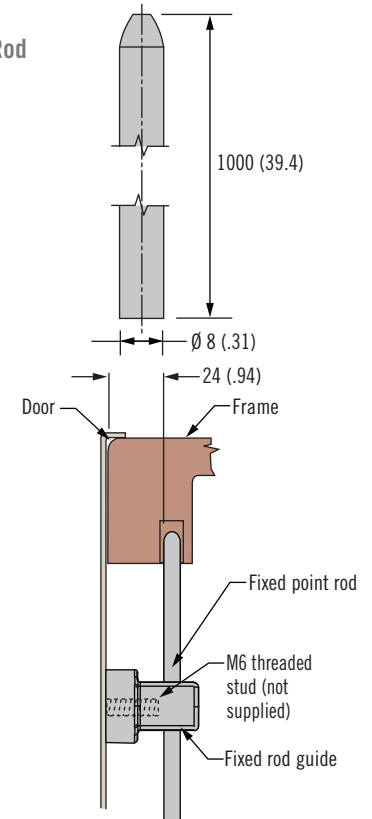
Order rod and rod guide separately see tables

Other rod lengths available. Please contact Southco

#### Rods



#### Fixed Point Rod

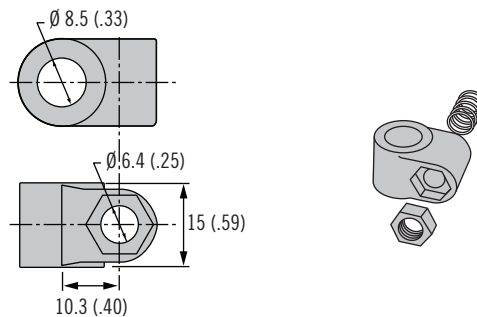


Rod Roller Steel Part Number
A5-56-1000-21

Material	Fixed Point Rod Part Number
Aluminum	A5-55-1000-10
Steel	A5-55-1000-11

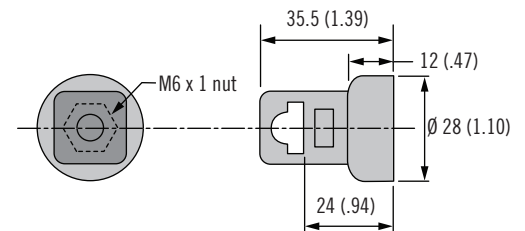
#### Rod Guides

##### Adjustable



Adjustable Rod Guide Part Number (includes 2 rod guides, 2 springs and 2 M6 nuts)
A5-87-401

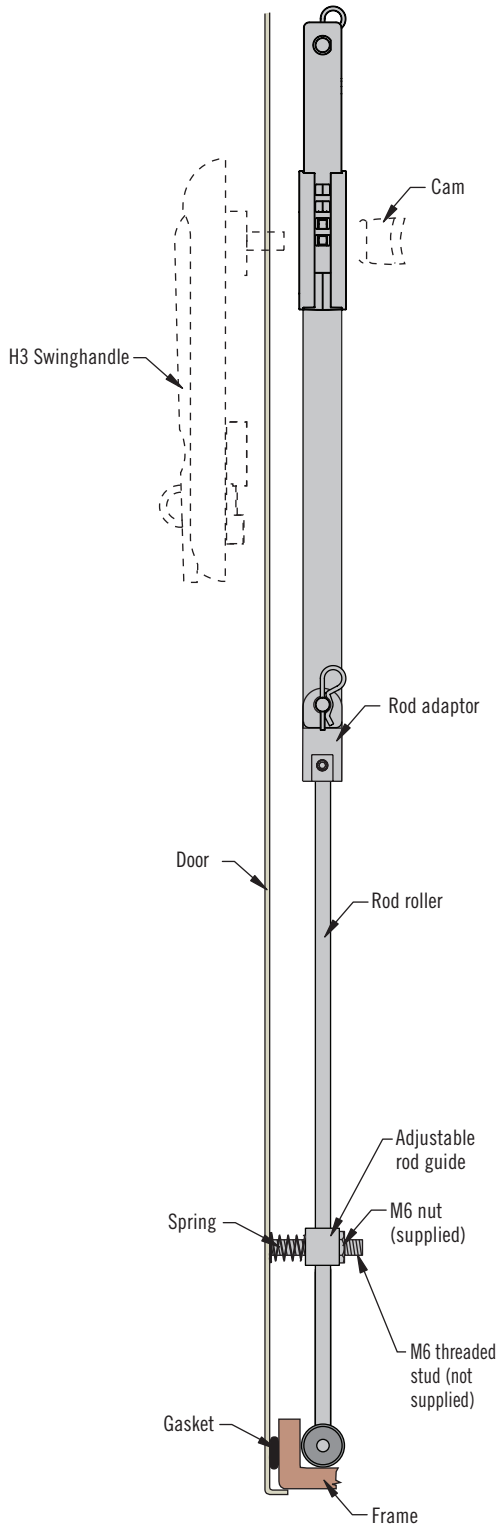
##### Fixed



Fixed Rod Guide Part Number (one piece supplied)
A5-81-301-71

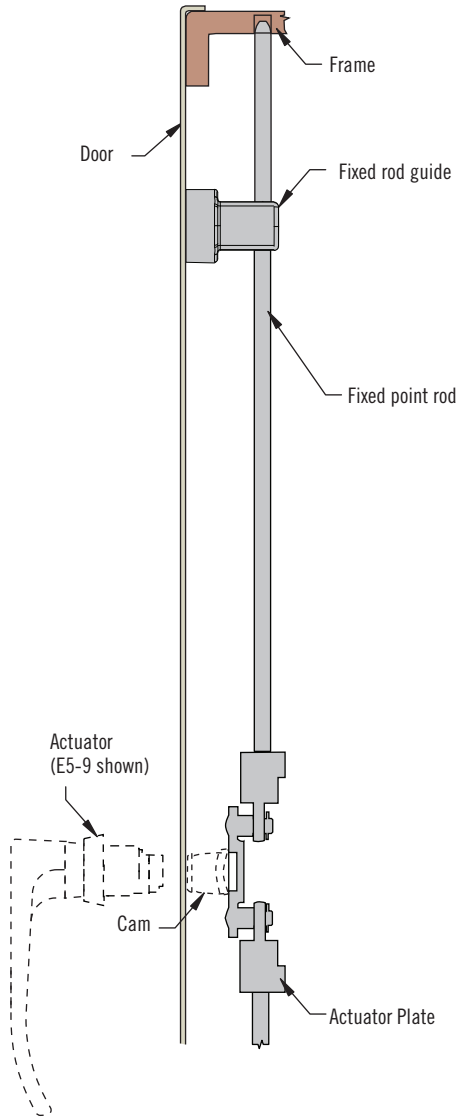
**Linear Actuator Assembly**

(adjustable with rod roller shown)



**Actuator Plate Assembly**

(fixed point shown)



**Notes**

Modular system allows for any configuration of rod and rod guides

